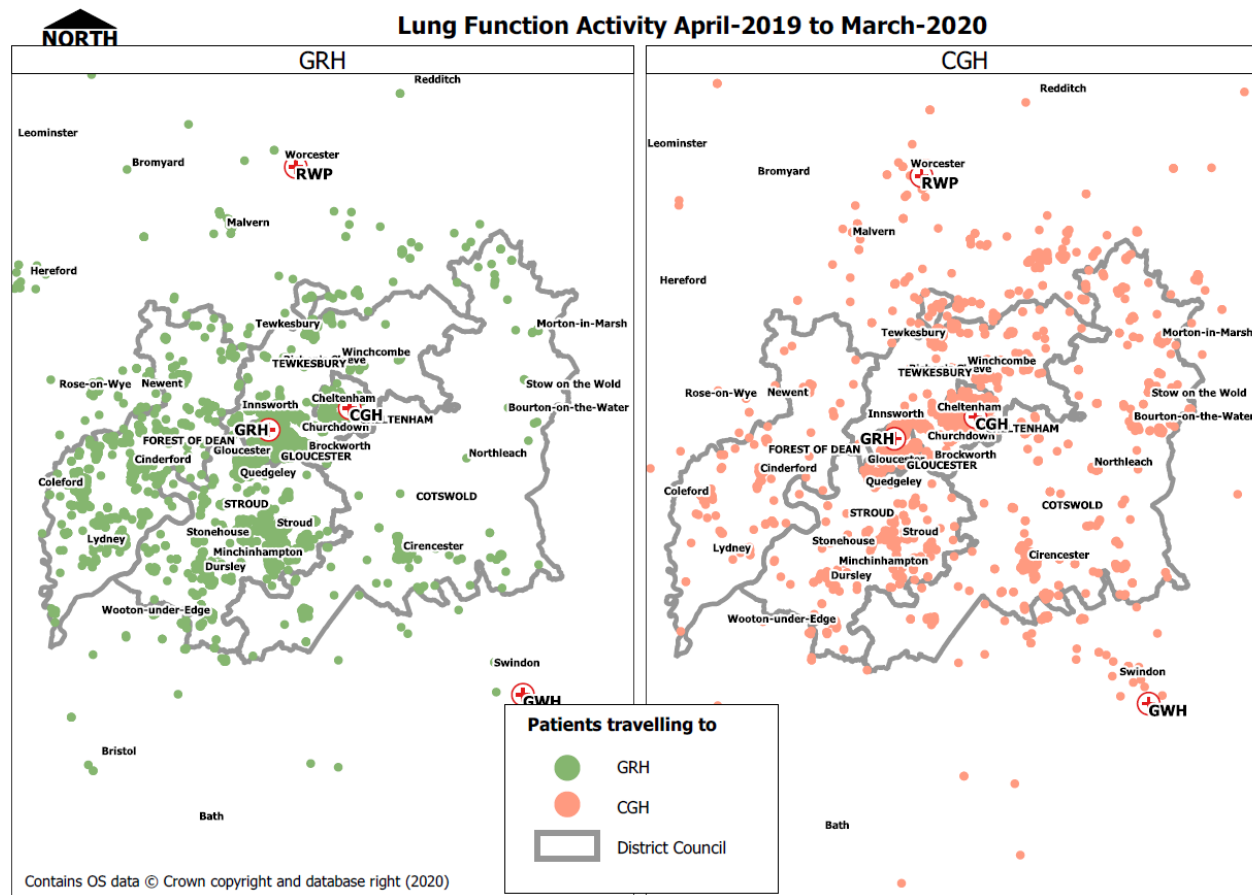


Lung Function & Sleep Services – Travel Impact

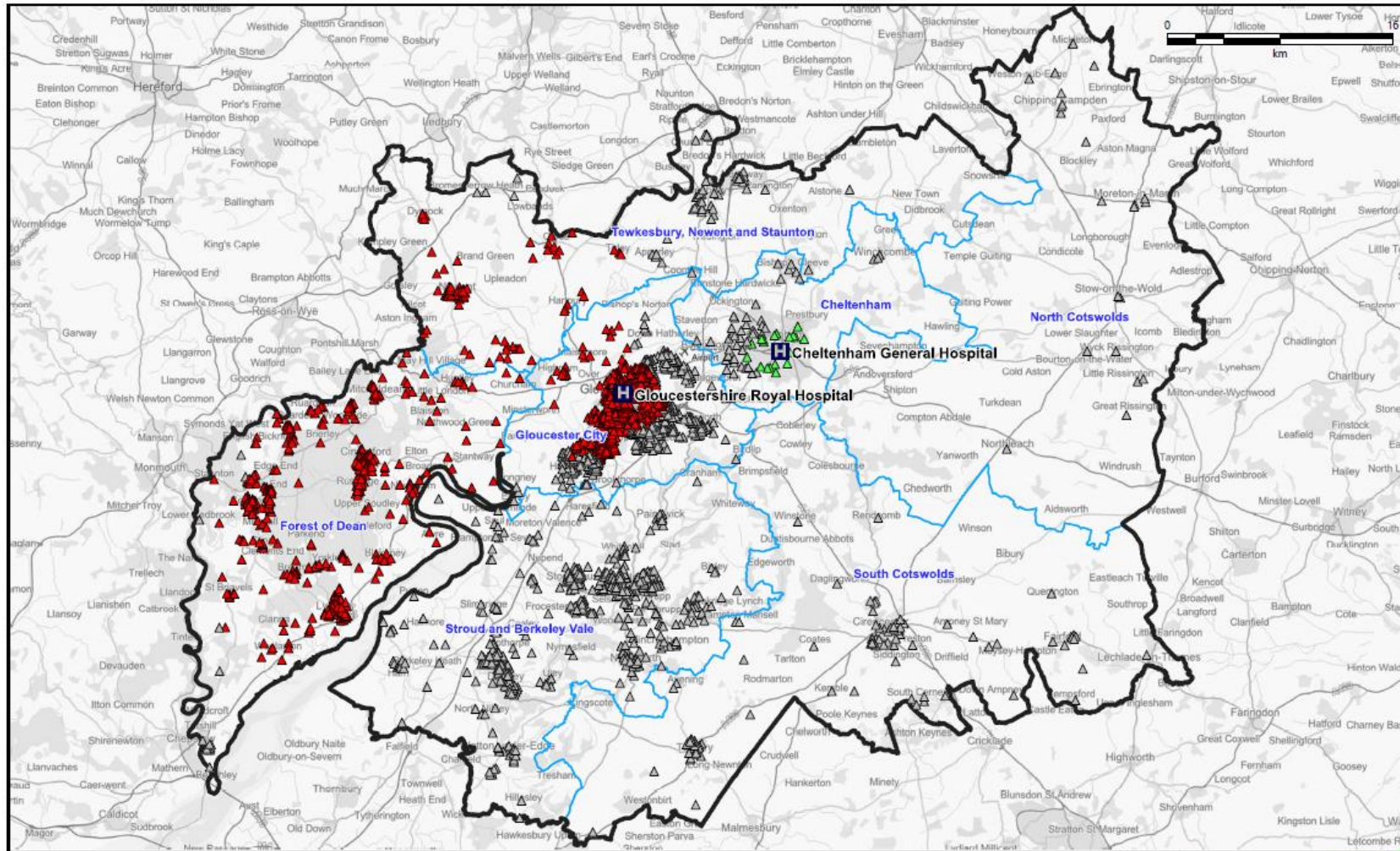
Current state' service model


Whilst the majority of services are available at both sites the maps below, which reflect where patients live and which site they attended, illustrates there is currently a broad distribution of patients across the county attending each site and most specifically at CGH, with patients often choosing the site with the shortest wait.

Please note that each 'dot' represents 1 patient.

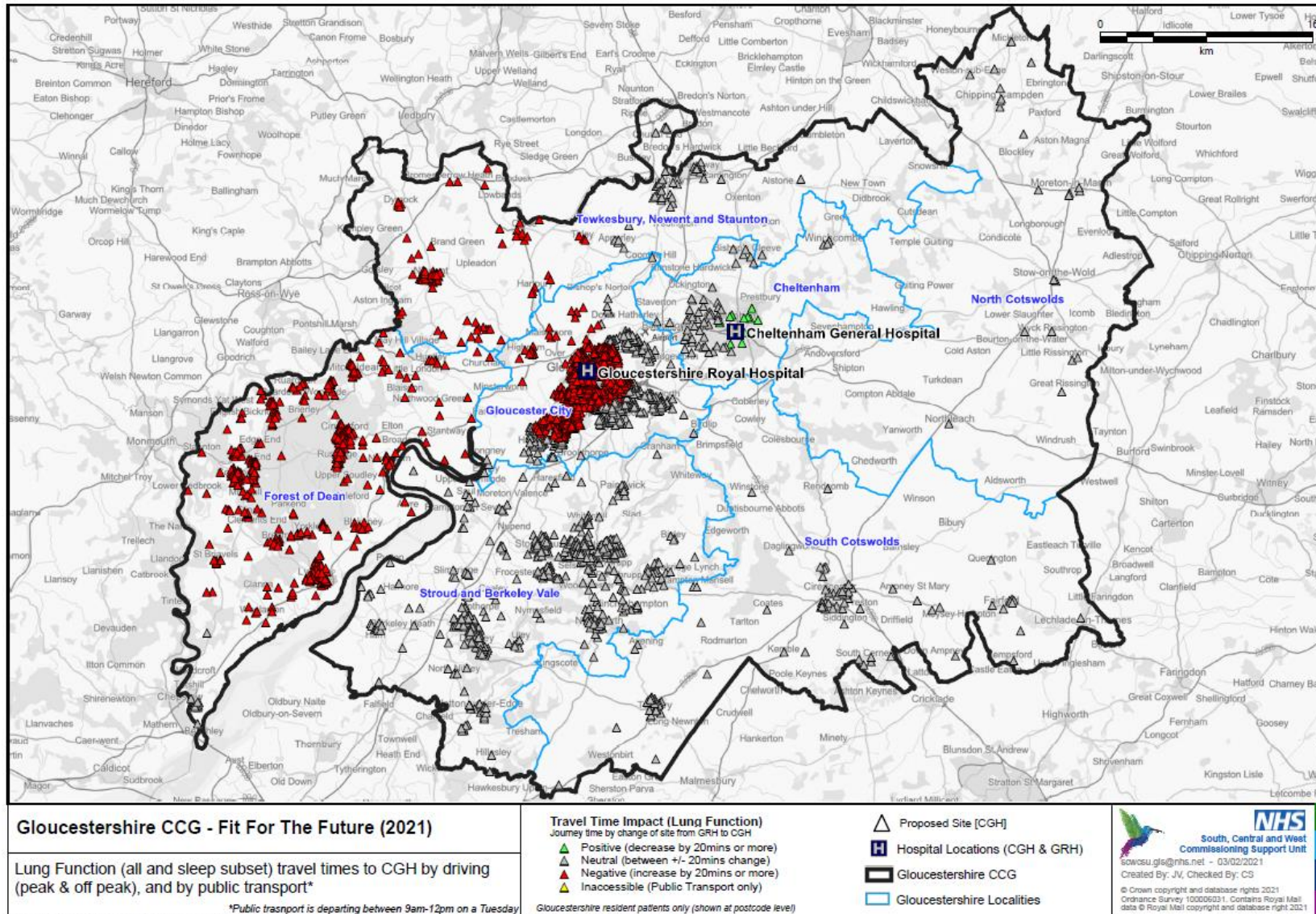


Proposal - Peak car

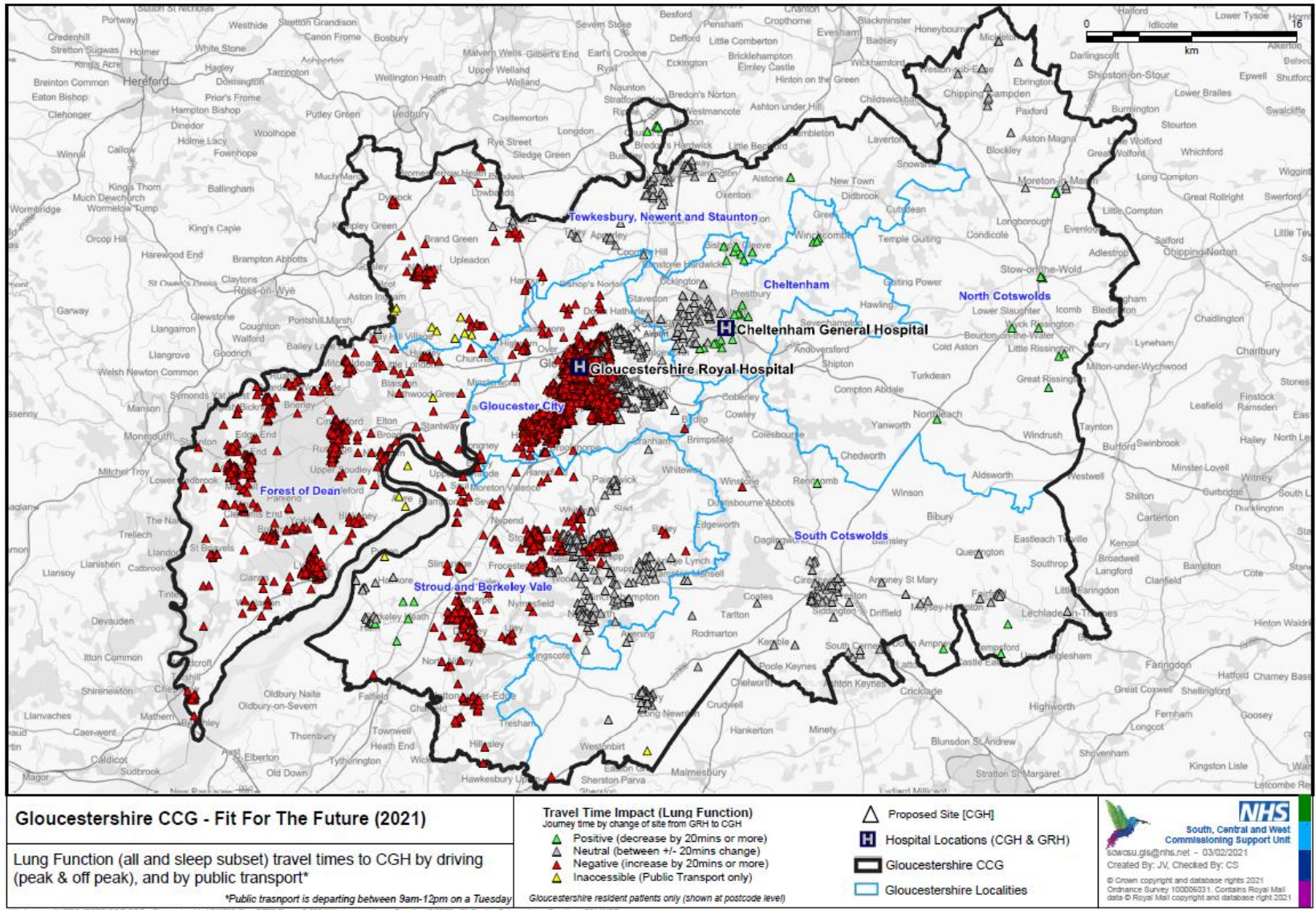


<p>Gloucestershire CCG - Fit For The Future (2021)</p> <p>Lung Function (all and sleep subset) travel times to CGH by driving (peak & off peak), and by public transport*</p> <p><small>*Public transport is departing between 9am-12pm on a Tuesday</small></p>	<p>Travel Time Impact (Lung Function) Journey time by change of site from GRH to CGH</p> <ul style="list-style-type: none"> ▲ Positive (decrease by 20mins or more) ▲ Neutral (between +/- 20mins change) ▲ Negative (increase by 20mins or more) ▲ Inaccessible (Public Transport only) <p><small>Gloucestershire resident patients only (shown at postcode level)</small></p>	<ul style="list-style-type: none"> ▲ Proposed Site [CGH] H Hospital Locations (CGH & GRH) ▭ Gloucestershire CCG ▭ Gloucestershire Localities 	 <p>NHS South, Central and West Commissioning Support Unit</p> <p>slowcsu.gis@nhs.net - 03/02/2021 Created By: JW, Checked By: CS</p> <p><small>© Crown copyright and database rights 2021 Ordnance Survey 100006031. Contains Royal Mail data © Royal Mail copyright and database right 2021</small></p>
---	--	--	---

Proposal – off-Peak car



Proposal – Public transport



Workshop: 15/09/2021 16:22:00 - Gloucestershire CCG (Task: EPTT - Phase 3 2021) Workshop: 15/09/2021 16:22:00 - Fit For The Future - Lung Function v011 WGS

Analysis

	Positive (decrease 20+ mins)	Neutral (+/- 20mins)	Negative (increase 20+ mins)	Total
Peak	38	7304	3007	10349
	0.4%	70.6%	29.1%	0.0%
off Peak	23	6971	3355	10349
	0.2%	67.4%	32.4%	0.0%
Public	100	5628	4586	10314
	1.0%	54.6%	44.5%	0.0%

Weighted based on	Positive (decrease 20+ mins)	Neutral (+/- 20mins)	Negative (increase 20+ mins)
16.9% no car	0.2%	9.3%	7.6%
50:50 peak	0.2%	29.3%	12.1%
50:50 off peak	0.1%	28.0%	13.5%
Average	0.4%	66.5%	33.1%