

Fit for the Future

Ideas for Gloucestershire's hospitals.

Who we are,

One Gloucestershire Integrated Care System is a group or partnership between NHS health and care organisations.

Who is in the One Gloucestershire group or partnership?

- NHS Gloucestershire Clinical Commissioning Group
- GP's
- Gloucestershire Health and Care NHS Foundation Trust
- Gloucestershire Hospitals NHS Foundation Trust
- South Western Ambulance Service NHS Foundation Trust

We work together to keep people healthy by making sure there are good health services in the community and in hospitals.

You can get in touch

If you have any questions about this information and survey.

By e-mail glccg.participation@nhs.net

By phone to leave a message on 0800 0151 458

Or write to

Freepost RRYY-KSGT-AGBR,

Fit for the Future,

Sanger House,

Valiant Court,

Gloucester Business Park,

Gloucester,

GL3 4FE.





What is Fit for the Future about?

Fit for the Future is part of the big ideas One Gloucestershire have for special services at Cheltenham General Hospital and Gloucestershire Royal Hospital.



We want to make sure people have the right support with their health, from the right health staff, at the right time.

We want to make sure that we have the right number of excellent staff to help you stay healthy.



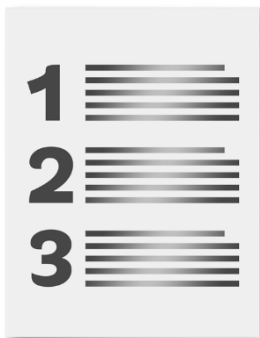
We have had some ideas about how we can change some things at Cheltenham General Hospital and Gloucestershire Royal Hospital so we can use our hospitals and staff better.

Our hospitals would then have much better services called **Centres of Excellence**

How we decided on the ideas about what could change.



We heard from lots of different people in 2019 including the public, patients, carers, and health staff to help us make a list of ideas about what could change.



We had a very long list of ideas at the start and after talking more to people at some workshops we have some ideas that we want to ask you about.

This is called a **consultation**.

2 Fit for the Future www.onegloucestershire.net

What we are asking you to think about.

Our ideas will mean some things could be different for you if you need hospital care. It would help us if you could think about,

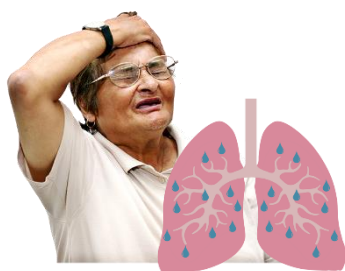


- What things might be better or worse for you or other people?
- If we do change what happens in Cheltenham General Hospital and Gloucestershire Royal Hospital, can you think of anything we haven't thought of that we should think about?
- Do you think we should make the ideas happen so we can use our hospitals and staff in a different way?

Acute Medicine (Acute Medical Take)

What is it?

Acute medicine is treatment and assessment for things like very bad headaches, chest pain and pneumonia. It is not about operations.



What happens now?

A lot of people who go to A&E can go home after being seen by the doctors and nurses. Other people may need a hospital stay at either Gloucester or Cheltenham.

If people need to stay in hospital, they could be in a unit at Cheltenham General Hospital or Gloucestershire Royal Hospital or in another ward where they can get the right care. It might mean that they have to move hospitals to get care from the right team of health staff.



3 Fit for the Future www.onegloucestershire.net



How we think this could change.

If people go to A&E at Cheltenham and, after assessment, it isn't clear there what is causing a health problem and further investigation is needed to work out what special team the person should be cared for by they would go to Gloucester to be assessed by the Acute Medicine team.

If people are at A&E and they can't go straight to a ward at Cheltenham or Gloucester and they need a stay in hospital looked after by the Acute Medicine team then this would be in Gloucester.

We think people would get the best care if we had Acute Medicine, (Acute Medical Take) in one place at Gloucestershire Royal Hospital.

General Surgery

What is it?

These are emergency operations on your gut which is where you digest your food, this is called the Gastrointestinal (GI) System.



There are specially trained staff who look after either the upper part of the gut or the lower part. This is called Upper GI and Lower GI (Colorectal).

What happens now?

At the moment planned surgery for the **upper part** of the gut, called Upper GI Surgery is **only** at Gloucestershire Royal hospital.

Both hospitals do other surgery for the gut or Gastrointestinal System. This includes Emergency Surgery.

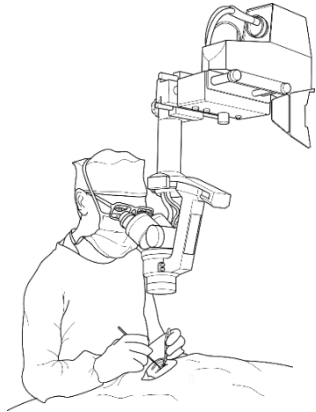
How we think this could change.



Our idea is to have the service for Emergency General Surgery at Gloucestershire Royal Hospital and have operations where people can go home the same day at Cheltenham General Hospital.

We also want to know where you think we should do the planned operations for Lower GI.

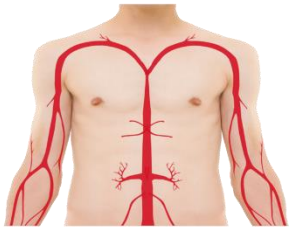
Image Guided Interventional Surgery (IGIS) and Vascular Surgery.



What is it?

Image Guided Interventional Surgery is where equipment like x rays and scans are used so that the surgeon can see what is going on inside your body. It is called **IGIS** for short.

Vascular Surgery is about finding out what is wrong and treating the blood vessels called arteries



What happens now?

At the moment we have some **IGIS** at both hospitals and Vascular Surgery is at Cheltenham General Hospital.

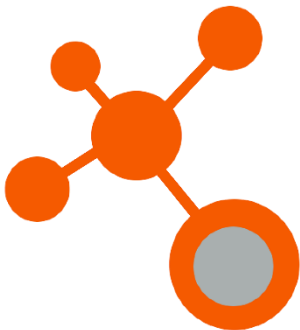


How we think this could change.

Our idea is to have a **HUB** for IGIS, 7 days a week 24 hours a day at Gloucestershire Royal Hospital and a **SPOKE** at Cheltenham General Hospital.

A **HUB** is the main place something happens, and a **SPOKE** is closely linked to the **HUB**.

We also want to know what you think about having Vascular Surgery at Gloucestershire Royal Hospital.



We did a test for the next 2 ideas; this is called a Pilot.

Gastroenterology Inpatient Services.



What is it?

Gastroenterology is where tests or treatment are needed for the stomach, bowel, liver, and pancreas and for things like Crohns disease and stomach ulcers.

Inpatient means someone who has to stay in hospital for treatment or tests.

What happens now?

In 2018 we moved Gastroenterology Inpatient Services to Cheltenham General Hospital to test out how this would work.

We think this has worked well.



How we think this could change.

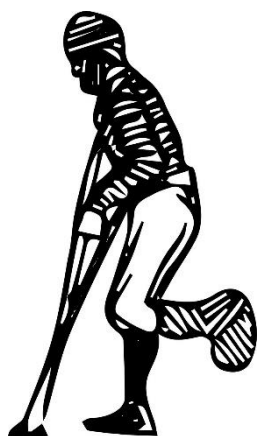
Our idea is not to change what we are doing but to carry on doing Gastroenterology at Cheltenham General Hospital.

Trauma and Planned Orthopaedic Surgery.

What is it?

Trauma Surgery is when people need operations because they have been involved in an accident.

Planned Orthopaedic Surgery are operations for things like hip and knee replacements.



What happens now?

As part of our test or Pilot, we have been doing all the Trauma Surgery at Gloucestershire Royal Hospital.



A part of our test or Pilot, we have been doing our Planned Orthopaedic operations for things like hip and knee replacements at Cheltenham General hospital.

We think this has worked well.



How we think this could change.

Our idea is not to change what we are doing but to carry on doing Trauma Surgery at Gloucestershire Royal Hospital and Planned Orthopaedics at Cheltenham General Hospital

Tell us what you think.

You can tell us what you think of our ideas by filling in our survey.

Our survey will end on 17 December 2020 at 12pm.



Tell us what you think

1. Do you think the idea is a good one?

Yes

No

Not sure

You can fill in the survey online at, www.onegloucestershire.net/yoursay

Or you can send it free by post to the address on the front of this information.



7 Fit for the Future www.onegloucestershire.net