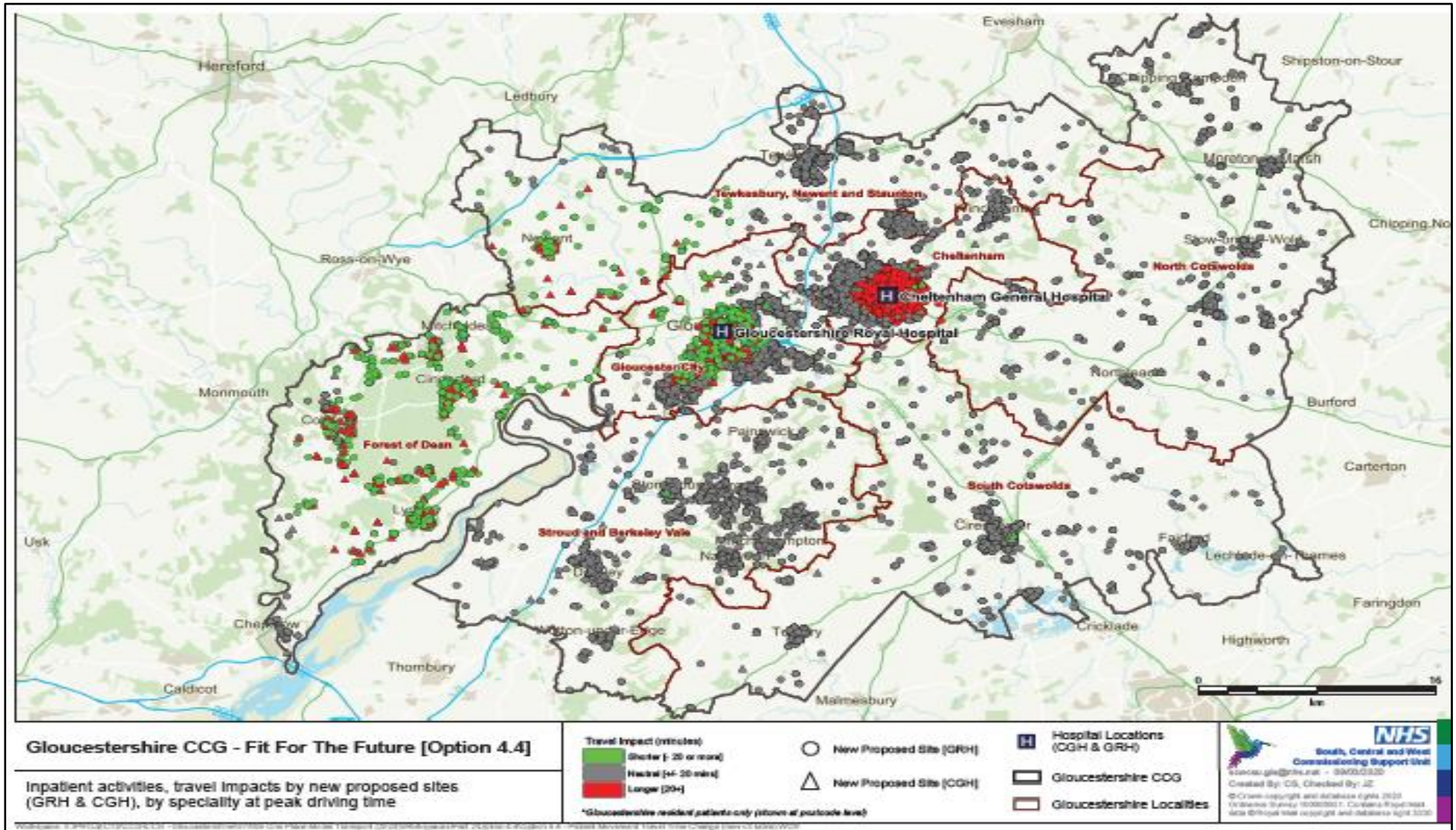


Model D (4.4) Centralise general surgery day cases and elective colorectal to Cheltenham. Centralise acute medicine and the IGIS hub to Gloucester (+ model B)

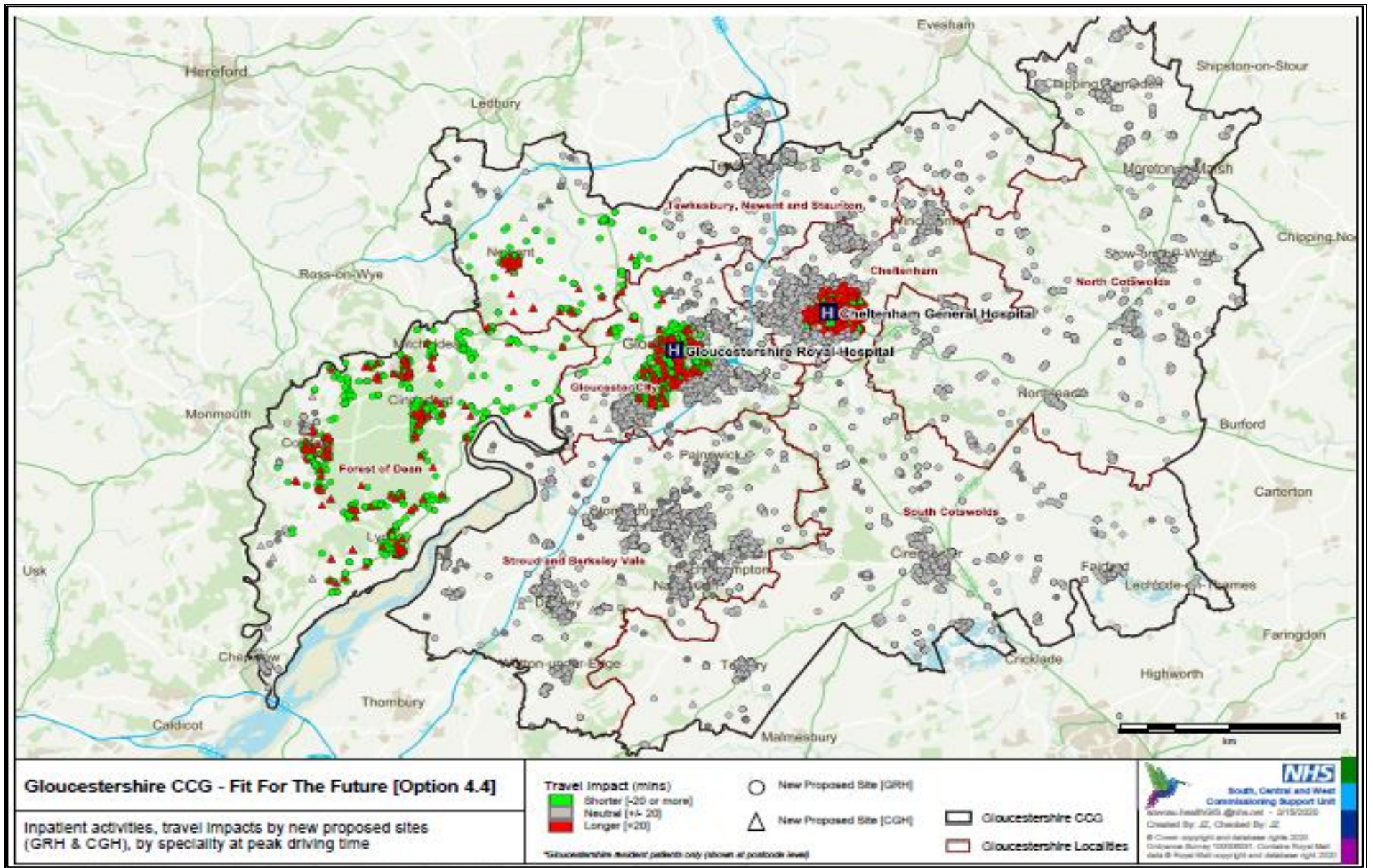
Total gross impact – Peak travel



		Positive (decrease 20+ mins)	Neutral (+/- 20mins)	Negative (increase 20+ mins)	Total
A3	Emergency Admissions to GRH	955	8,681	2,834	12,470
C3	Colorectal to GRH (non-elective)	20	172	52	244
C3	Colorectal staying at GRH		186		186
C5	Colorectal to CGH (elective and day cases)	34	461	325	820
C5	Colorectal staying at CGH		512		512
C3	General surgery to GRH (non-elective)	84	1,242	427	1,753
C3	General surgery staying at GRH		4,029		4,029
C11	General surgery to CGH (elective and day cases)	17	168	159	344
C11	General surgery staying at CGH		300		300
B2	Interventional Cardiology to GRH	609	1,537	250	2,396
B2	Vascular to GRH	222	979	107	1,308
B2	Vascular staying at GRH		148		148
B2	Vascular to CGH	0	4	3	7
B2	Vascular staying at CGH		140		140
	Total	1,941	18,559	4,157	24,657
	%	7.87%	75.27%	16.86%	

	Length of Stay	0-1	2-5	>6	Total
A3	Emergency Admissions to GRH	1016	786	1032	2,834
C3	Colorectal to GRH (non-elective)	28	9	15	52
C3	Colorectal staying at GRH	0	0	0	0
C5	Colorectal to CGH (elective and day cases)	208	49	68	325
C5	Colorectal staying at CGH	0	0	0	0
C3	General surgery to GRH (non-elective)	223	115	89	427
C3	General surgery staying at GRH	0	0	0	0
C11	General surgery to CGH (elective and day cases)	128	10	21	159
C11	General surgery staying at CGH	0	0	0	0
B2	Interventional Cardiology to GRH	155	34	61	250
B2	Vascular to GRH	73	12	22	107
B2	Vascular staying at GRH	0	0	0	0
B2	Vascular to CGH (day cases)	3	0	0	3
B2	Vascular staying at CGH	0	0	0	0
	Total	1834	1015	1308	4,157
	%	44%	24.5%	31.5%	

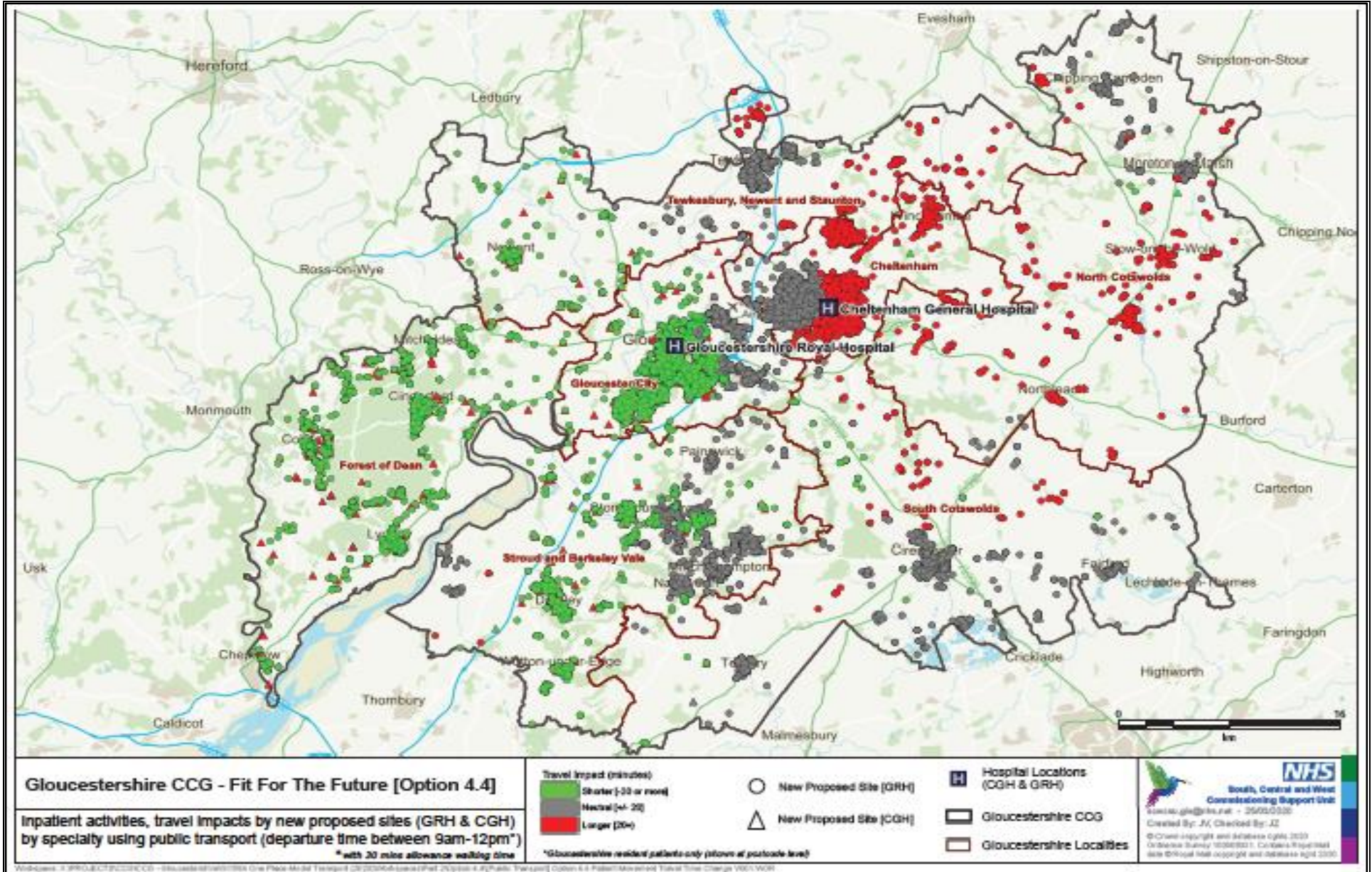
Total gross impact – Off peak



		Positive (decrease 20+ mins)	Neutral (+/- 20mins)	Negative (increase 20+ mins)	Total
A3	Emergency Admissions to GRH	932	9,469	2,069	12,470
C3	Colorectal to GRH (non-elective)	20	185	39	244
C3	Colorectal staying at GRH		186		186
C5	Colorectal to CGH (elective and day cases)	27	500	293	820
C5	Colorectal staying at CGH		512		512
C3	General surgery to GRH (non-elective)	74	1,342	337	1,753
C3	General surgery staying at GRH		4,029		4,029
C11	General surgery to CGH (elective and day cases)	14	182	148	344
C11	General surgery staying at CGH		300		300
B2	Interventional Cardiology to GRH	545	1,680	173	2,398
B2	Vascular to GRH	254	967	87	1,308
B2	Vascular staying at GRH		148		148
B2	Vascular to CGH	0	6	1	7
B2	Vascular staying at CGH		140		140
	Total	1,866	19,646	3,147	24,659
	%	7.57%	79.67%	12.76%	

Length of Stay		0-1	2-5	>6	Total
A3	Emergency Admissions to GRH	756	587	726	2,069
C3	Colorectal to GRH (non-elective)	21	9	9	39
C3	Colorectal staying at GRH	0	0	0	0
C5	Colorectal to CGH (elective and day cases)	187	49	57	293
C5	Colorectal staying at CGH	0	0	0	0
C3	General surgery to GRH (non-elective)	178	92	67	337
C3	General surgery staying at GRH	0	0	0	0
C11	General surgery to CGH (elective and day cases)	119	9	20	148
C11	General surgery staying at CGH	0	0	0	0
B2	Interventional Cardiology to GRH	104	27	42	173
B2	Vascular to GRH	61	7	19	87
B2	Vascular staying at GRH	0	0	0	0
B2	Vascular to CGH (day cases)	1	0	0	1
B2	Vascular staying at CGH	0	0	0	0
	Total	1427	780	940	3,147
	%	45%	25%	30%	

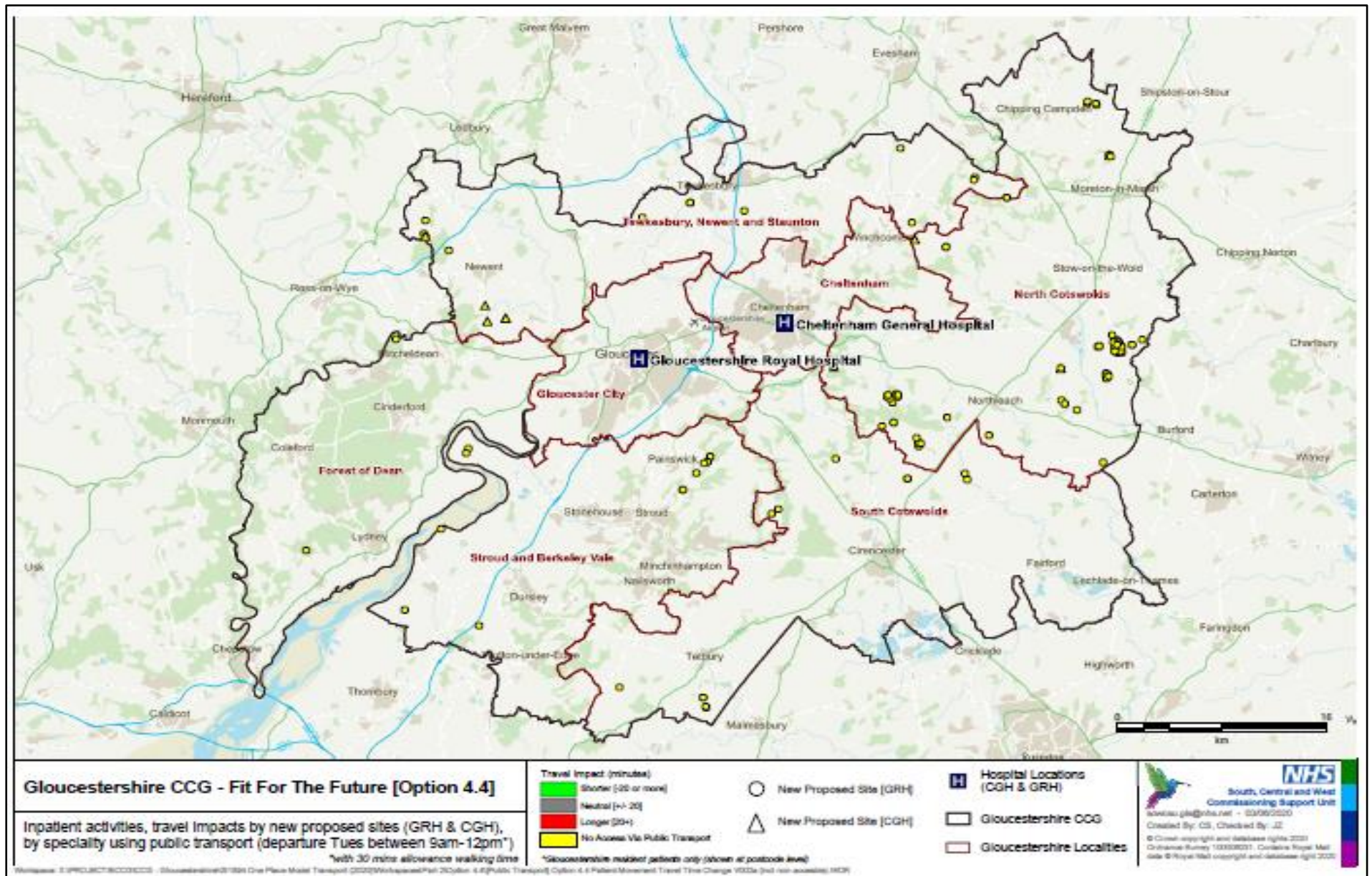
Public Transport



		Positive (decrease 20+ mins)	Neutral (+/- 20mins)	Negative (increase 20+ mins)	Total
A3	Emergency Admissions to GRH	1847	5764	4688	12300
C3	Colorectal to GRH (non-elective)	36	114	91	241
C3	Colorectal staying at GRH		186		186
C5	Colorectal to CGH (elective and day cases)	67	204	536	807
C5	Colorectal staying at CGH		512		512
C3	General surgery to GRH (non-elective)	162	834	724	1720
C3	General surgery staying at GRH		4029		4029
C11	General surgery to CGH (elective and day cases)	22	65	254	341
C11	General surgery staying at CGH		300		300
B2	Interventional Cardiology to GRH	999	893	467	2359
B2	Vascular to GRH	571	470	255	1296
B2	Vascular staying at GRH		148		148
B2	Vascular to CGH (day cases)	0	4	3	7
B2	Vascular staying at CGH		140		140
	Total	3704	13663	7018	24386
	%	15.19%	56.03%	28.78%	

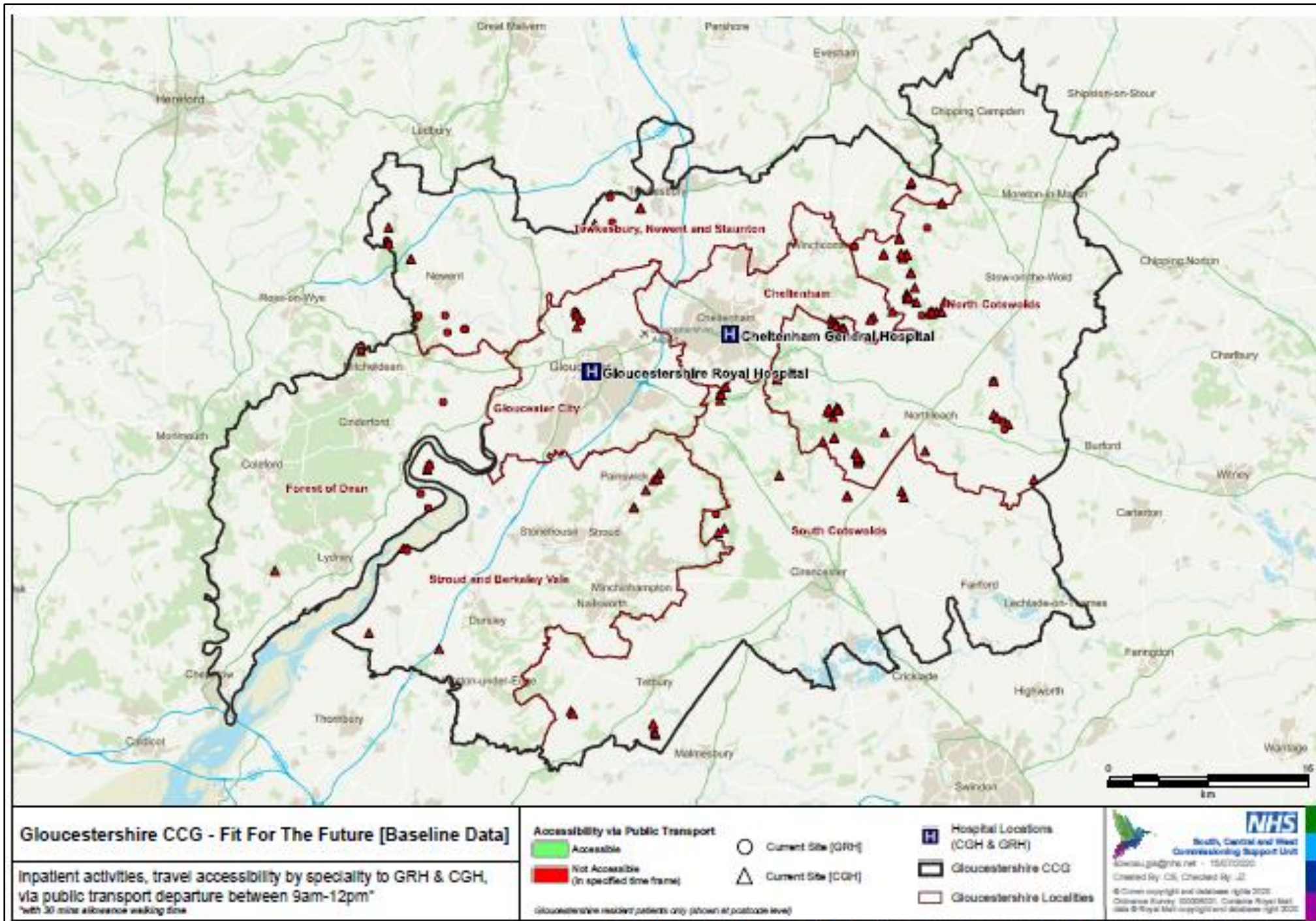
	Length of Stay	0-1	43953	>6	Total
A3	Emergency Admissions to GRH	1664	1333	1691	4688
C3	Colorectal to GRH (non-elective)	39	18	34	91
C3	Colorectal staying at GRH	0	0	0	
C5	Colorectal to CGH (elective and day cases)	343	80	113	536
C5	Colorectal staying at CGH	0	0	0	0
C3	General surgery to GRH (non-elective)	372	210	142	724
C3	General surgery staying at GRH	0	0	0	0
C11	General surgery to CGH (elective and day cases)	197	18	39	254
C11	General surgery staying at CGH	0	0	0	0
B2	Interventional Cardiology to GRH	306	61	100	467
B2	Vascular to GRH	176	19	60	255
B2	Vascular staying at GRH	0	0	0	0
B2	Vascular to CGH (day cases)	3	0	0	3
B2	Vascular staying at CGH	0	0	0	0
	Total	3,100	1,739	2179	7018
	%	44%	25%	31%	

Public Transport Inaccessibility



Specialty to the new proposed site	Total number of patients with access to PT	Total number of patients without access to PT	Total	%
Emergency admission to GRH	12,300	170	12,470	1.4%
Colorectal Surgery to GRH	241	3	244	1.2%
Colorectal Surgery to CGH	807	13	820	1.6%
General Surgery to GRH	1,720	33	1,753	1.9%
General Surgery to CGH	340	4	344	1.2%
Interventional Cardiology to GRH	2,359	37	2,396	1.5%
Vascular to GRH	1,296	12	1,308	0.9%
Vascular to GRH	7	0	7	0.0%
Total	19,070	272	19,342	Ave 1.21%

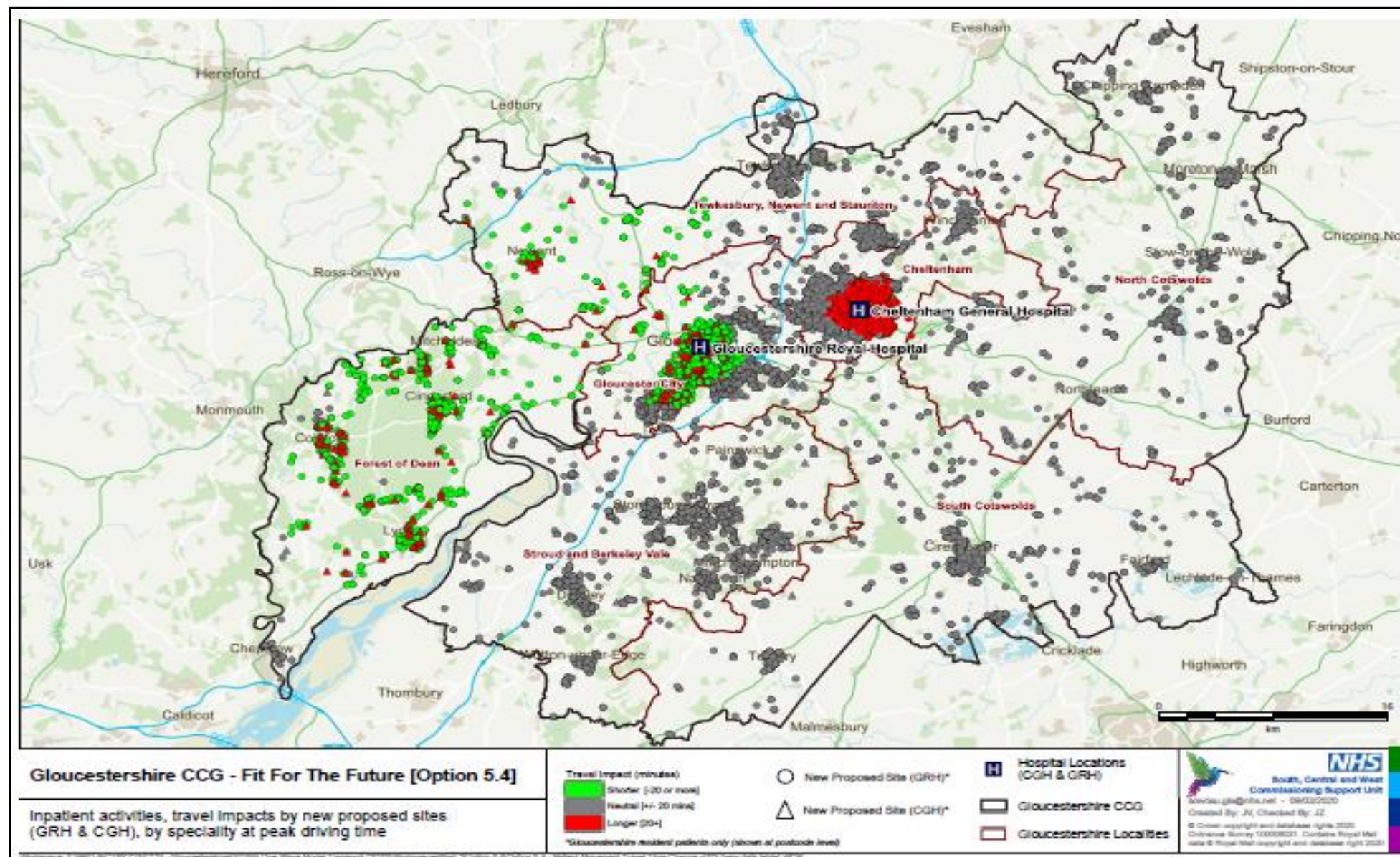
Baseline inaccessibility



Speciality	Total number of patients without access to PT	Total number of patients with access to PT	%
Colorectal	27	1,783	1.5%
Emergency Admissions	144	12,471	1.2%
General Surgery	86	6,456	1.3%
Interventional Cardiology	42	2,398	1.8%
Vascular	18	1,611	1.1%
Total	317	24,719	Ave – 1.38%

Model E (5.4) Centralise complex elective GI to Gloucester (+ model B)

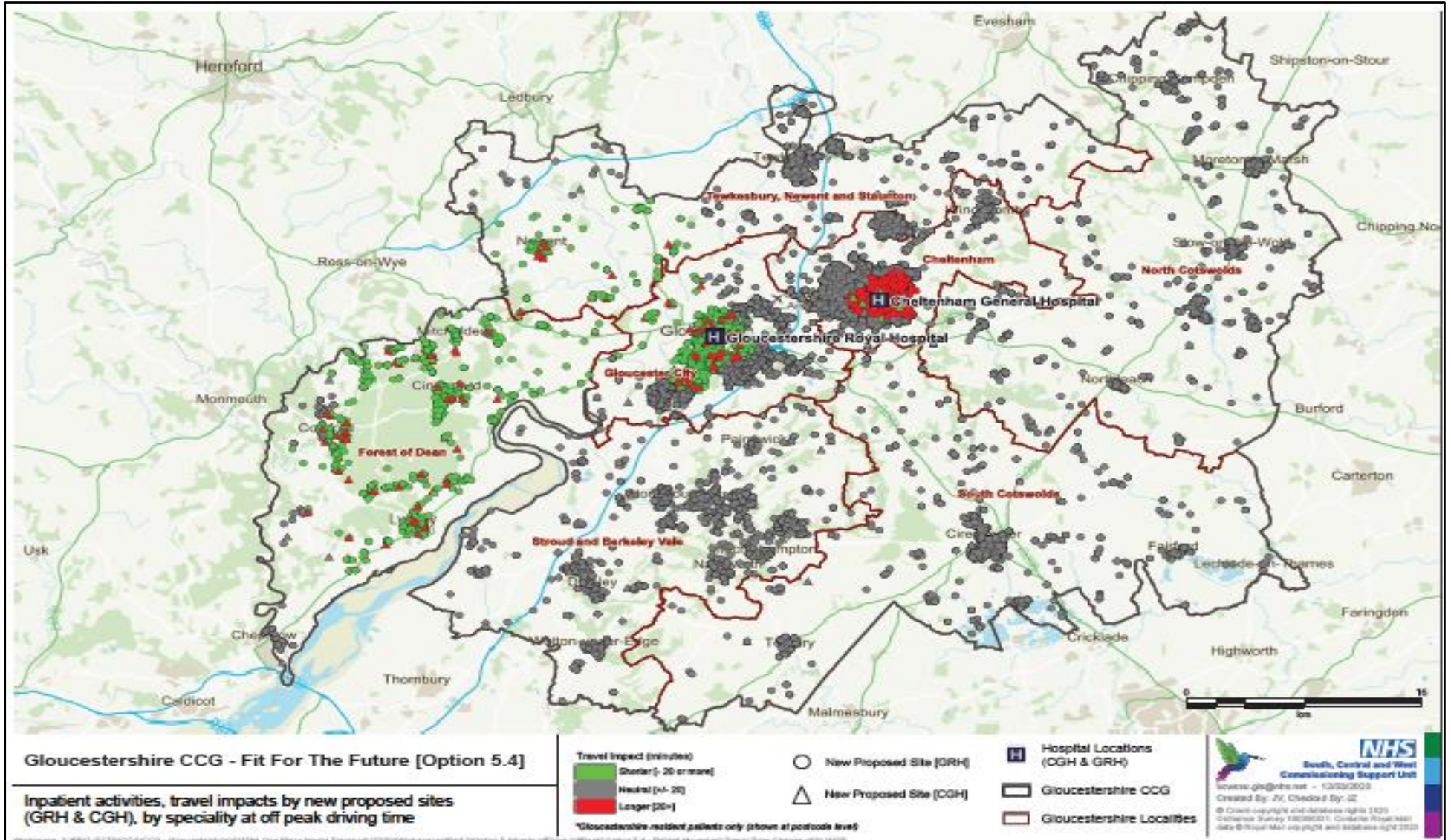
Total gross Impact – Peak travel



		Positive (decrease 20+ mins)	Neutral (+/- 20mins)	Negative (increase 20+ mins)	Total
A3	Emergency Admissions to GRH	955	8,681	2,834	12,470
C3	Colorectal to GRH (non-elective and elective)	48	385	97	530
C3	Colorectal staying at GRH		596		596
C6	Colorectal to CGH (day cases)	18	231	164	413
C6	Colorectal staying at CGH		225		225
C3	General surgery to GRH (non-elective and elective)	108	1,340	447	1,895
C3	General surgery staying at GRH		4,220		4,220
C11	General surgery to CGH (day cases)	8	76	92	176
C11	General surgery staying at CGH		177		177
B2	Interventional Cardiology to GRH	609	1,537	250	2,396
B2	Vascular to GRH	222	979	107	1,308
B2	Vascular staying at GRH		148		148
B2	Vascular to CGH	0	4	3	7
B2	Vascular staying at CGH		140		140
	Total	1,968	18,739	3,994	24,701
	%	7.97%	75.86%	16.17%	

	Length of Stay	0-1	2-5	>6	Total
A3	Emergency Admissions to GRH	1016	786	1032	2,834
C3	Colorectal to GRH (non-elective)	39	20	38	97
C3	Colorectal staying at GRH	0	0	0	0
C6	Colorectal to CGH (elective and day cases)	164	0	0	164
C6	Colorectal staying at CGH	0	0	0	0
C3	General surgery to GRH (non-elective)	233	118	96	447
C3	General surgery staying at GRH	0	0	0	0
C11	General surgery to CGH (elective and day cases)	92	0	0	92
C11	General surgery staying at CGH	0	0	0	0
B2	Interventional Cardiology to GRH	233	118	96	447
B2	Vascular to GRH	73	12	22	107
B2	Vascular staying at GRH	0	0	0	0
B2	Vascular to CGH (day cases)	3	0	0	3
B2	Vascular staying at CGH	0	0	0	0
	Total	1,853	1054	1284	4,191
	%	44%	25%	30%	

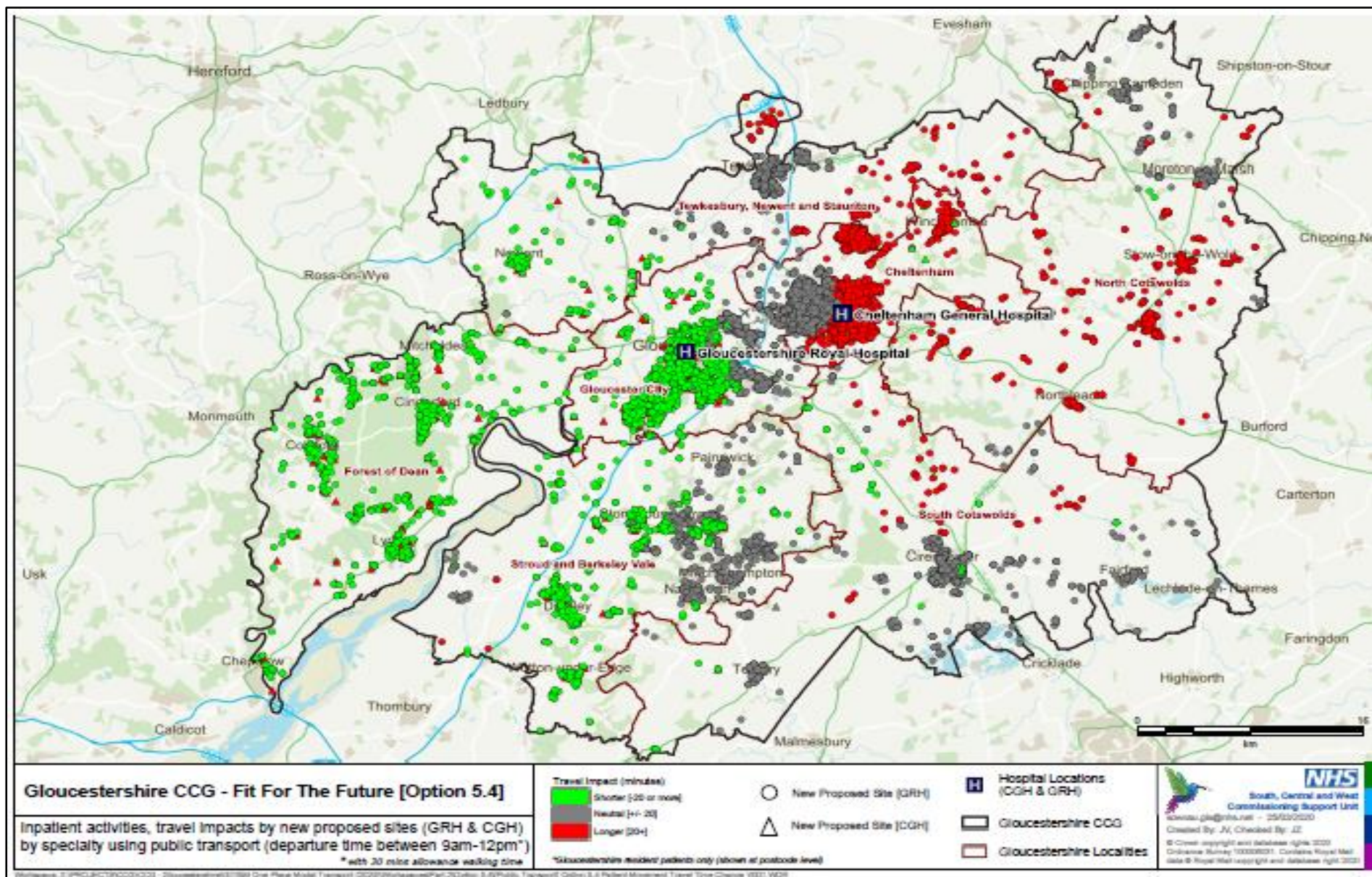
Total gross Impact – Off peak travel



		Positive (decrease 20+ mins)	Neutral (+/- 20mins)	Negative (increase 20+ mins)	Total
A3	Emergency Admissions to GRH	932	9,469	2,069	12,470
C3	Colorectal to GRH (non-elective and elective)	45	410	76	531
C3	Colorectal staying at GRH		596		596
C6	Colorectal to CGH (day cases)	14	250	149	413
C6	Colorectal staying at CGH		225		225
C3	General surgery to GRH (non-elective and elective)	95	1,444	356	1,895
C3	General surgery staying at GRH		4,220		4,220
C11	General surgery to CGH (day cases)	8	83	85	176
C11	General surgery staying at CGH		177		177
B2	Interventional Cardiology to GRH	545	1,680	173	2,398
B2	Vascular to GRH	254	967	87	1,308
B2	Vascular staying at GRH		148		148
B2	Vascular to CGH	0	6	1	7
B2	Vascular staying at CGH		140		140
	Total	1,893	19,815	2,996	24,704
	%	7.66%	80.21%	12.13%	

	Length of Stay	0-1	02-May	>6	Total
A3	Emergency Admissions to GRH	756	587	726	2,069
C3	Colorectal to GRH (non-elective)	29	18	29	76
C3	Colorectal staying at GRH	0	0	0	0
C6	Colorectal to CGH (elective and day cases)	149	0	0	149
C6	Colorectal staying at CGH	0	0	0	0
C3	General surgery to GRH (non-elective)	187	95	74	356
C3	General surgery staying at GRH	0	0	0	0
C11	General surgery to CGH (elective and day cases)	85	0	0	85
C11	General surgery staying at CGH	0	0	0	0
B2	Interventional Cardiology to GRH	104	27	42	173
B2	Vascular to GRH	61	7	19	87
B2	Vascular staying at GRH	0	0	0	0
B2	Vascular to CGH (day cases)	1	0	0	1
B2	Vascular staying at CGH	0	0	0	0
	Total	1372	734	890	2996
	%	46%	24.4%	30%	

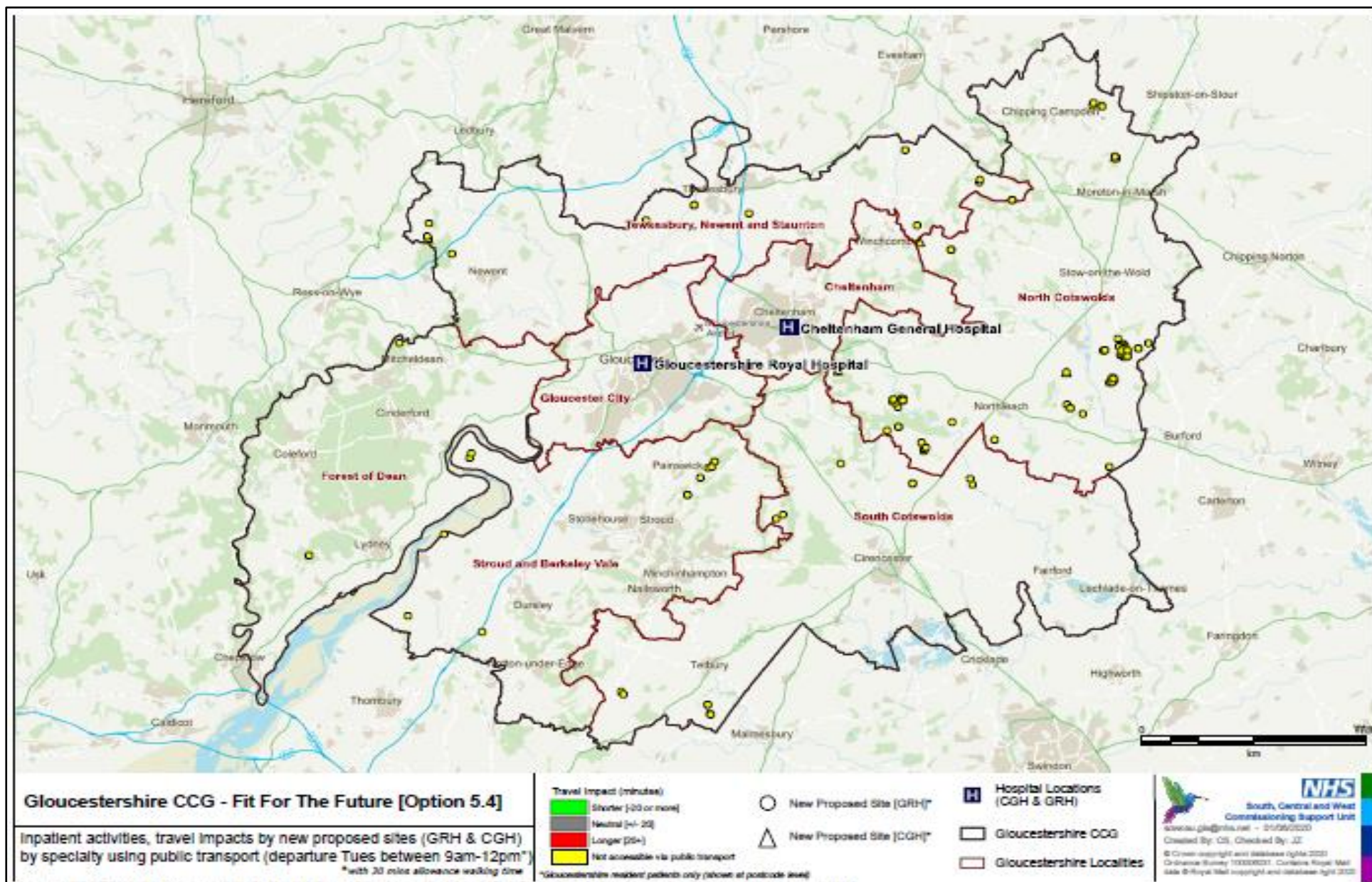
Public transport



		Positive (decrease 20+ mins)	Neutral (+/- 20mins)	Negative (increase 20+ mins)	Total
A3	Emergency Admissions to GRH	1847	5764	4688	12300
C3	Colorectal to GRH (non-elective and elective)	86	264	173	523
C3	Colorectal staying at GRH		596		596
C6	Colorectal to CGH (day cases)	35	103	267	405
C6	Colorectal staying at CGH		225		225
C3	General surgery to GRH (non-elective and elective)	203	904	754	1861
C3	General surgery staying at GRH		4220		4220
C11	General surgery to CGH (day cases)	10	30	134	174
C11	General surgery staying at CGH		177		177
B2	Interventional Cardiology to GRH	999	893	467	2359
B2	Vascular to GRH	571	470	255	1296
B2	Vascular staying at GRH		148		148
B2	Vascular to CGH (Day cases)	0	7		7
B2	Vascular staying at CGH (Day Cases)		140		140
	Total	3751	13941	6738	24431
	%	15.35%	57.06%	27.58%	

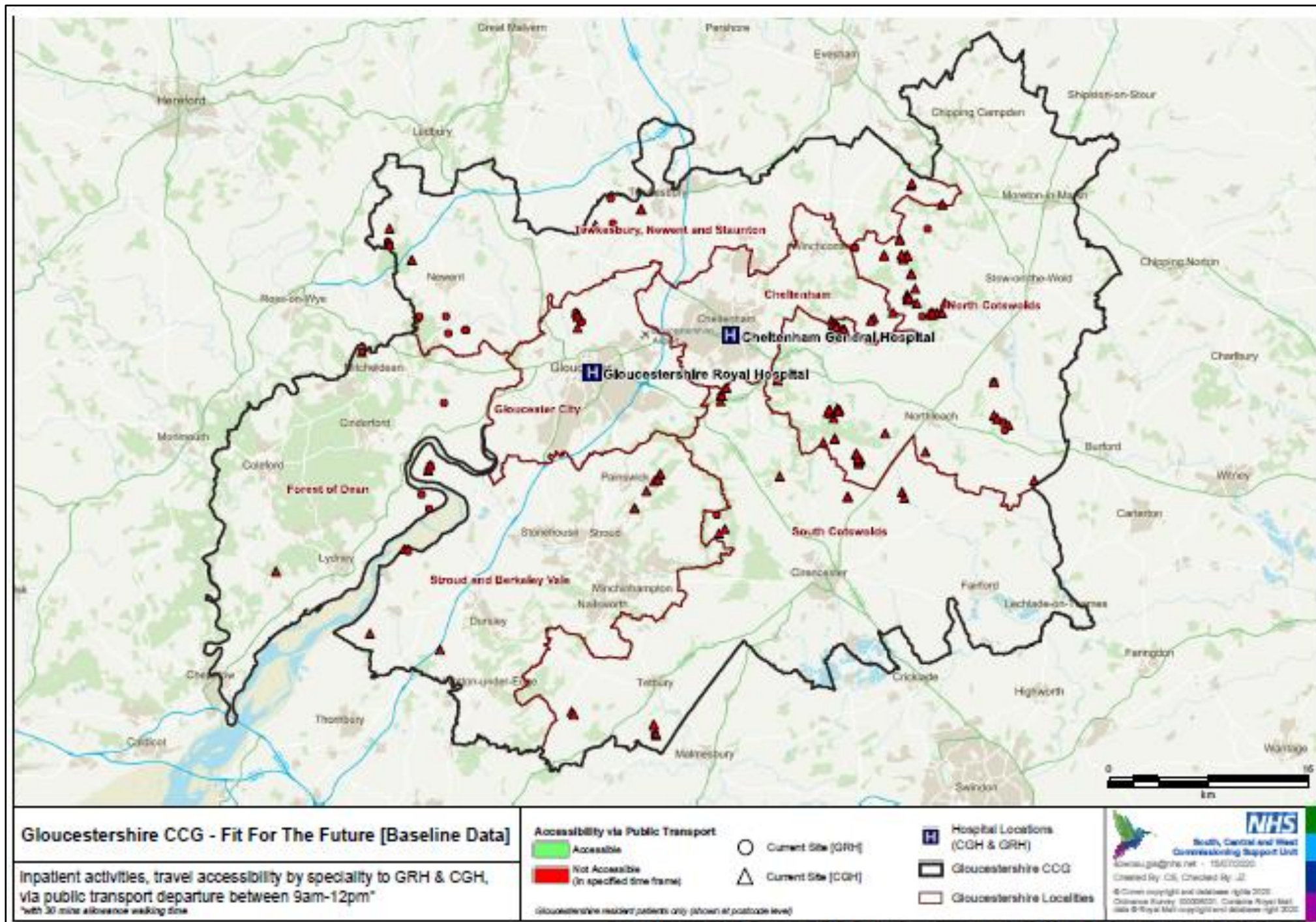
	Length of Stay	0-1	2-5	>6	Total
A3	Emergency Admissions to GRH	1664	1333	1691	4688
C3	Colorectal to GRH (non-elective)	55	46	72	173
C3	Colorectal staying at GRH	0	0	0	0
C6	Colorectal to CGH (elective and day cases)	267	0	0	267
C6	Colorectal staying at CGH	0	0	0	0
C3	General surgery to GRH (non-elective)	383	215	156	754
C3	General surgery staying at GRH	0	0	0	0
C11	General surgery to CGH (elective and day cases)	134	0	0	134
C11	General surgery staying at CGH	0	0	0	0
B2	Interventional Cardiology to GRH	306	61	100	467
B2	Vascular to GRH	176	19	60	255
B2	Vascular staying at GRH	0	0	0	0
B2	Vascular to CGH (day cases)	3	0	0	3
B2	Vascular staying at CGH	0	0	0	0
	Total	2988	1674	2079	6741
	%	44%	25%	31%	

Public Transport Inaccessibility



Specialty to the new proposed site	Total number of patients with access to PT	Total number of patients without access to PT	Total	%
Emergency admission to GRH	12,300	170	12,470	1.4%
Colorectal Surgery to GRH	523	7	530	1.3%
Colorectal Surgery to CGH	405	8	413	1.9%
General Surgery to GRH	1,861	34	1,895	1.8%
General Surgery to CGH	174	2	176	1.1%
Interventional Cardiology to GRH	2,359	37	2,396	1.5%
Vascular to GRH	1,296	12	1,308	0.9%
Vascular to GRH	7	0	7	0.0%
Total	18,925	270	19,195	Ave 1.24%

Baseline inaccessibility



Speciality	Total number of patients without access to PT	Total number of patients with access to PT	Total	%
Colorectal	27	1,783	1810	1.5%
Emergency Admissions	144	12,471	12615	1.2%
General Surgery	86	6,456	6542	1.3%
Interventional Cardiology	42	2,398	2440	1.8%
Vascular	18	1,611	1629	1.1%
Total	317	24,719	25,036	Ave 1.38%